



Ft. Pierce Yacht Club

FPYC Race Courses

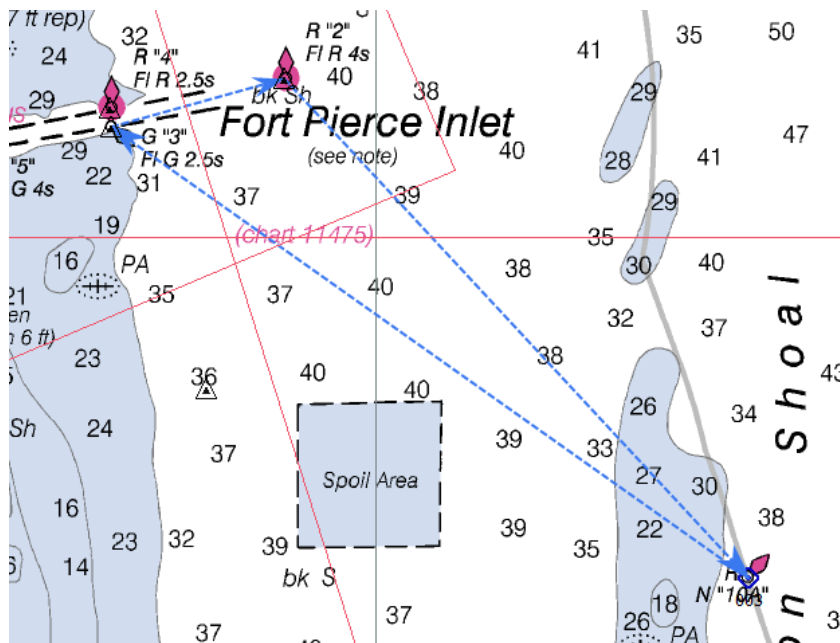
Virtual 10A mark coordinates (former buoy 10A, now retired):

27° 26.619' N

80° 13.305' W

Race Course 1 (6.8nm):

Starboard Race: Start eastbound between G3 & R4; take R2 then virtual 10A to **starboard**; Finish westbound between through G3 & R4. **Port Race:** Take virtual 10A then R2 to **port**.





Ft. Pierce Yacht Club

Race Course 2 (6.4nm):

Starboard Race: Start eastbound between G3 & R4; take Virtual 10A to **starboard**; Finish westbound between G3 & R4. **Port Race:** take Virtual 10A to **port**.





Ft. Pierce Yacht Club

Race Course 3 (2.8nm):

Starboard Race: Start eastbound between G3 & R4; Round R2 to **starboard**; Round R4 to **starboard**; Round R2 to **starboard**; Finish westbound between G3 & R4. **Port** race: take all marks to **port**.

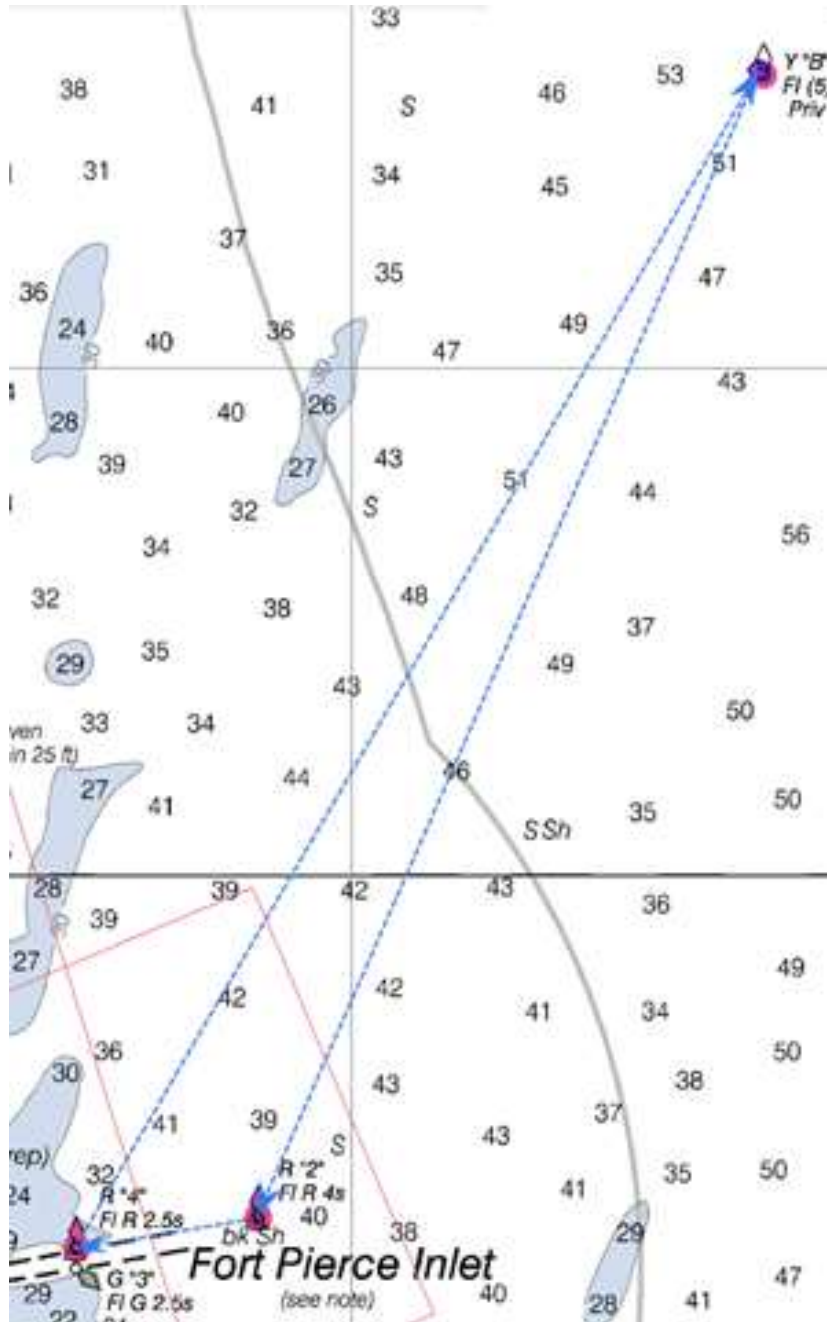




Ft. Pierce Yacht Club

Race Course 4 (11.0 nm):

Starboard Race: Start eastbound between G3 & R4; take YB then R2 to **starboard**; Finish westbound between G3 & R4. **Port Race:** take R2, then YB to **port**.

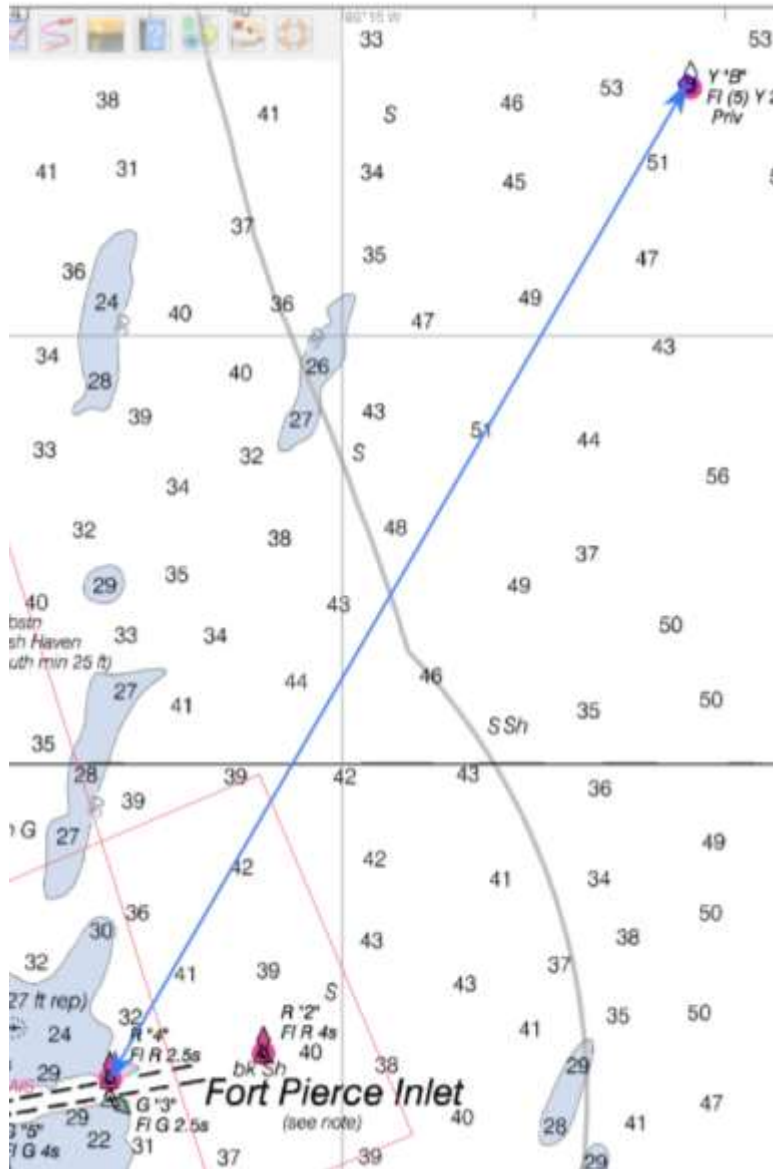




Ft. Pierce Yacht Club

Race Course 5 (10.7 nm):

Starboard Race: Start eastbound between G3 & R4; take YB to **starboard**; Finish westbound between G3 & R4. **Port Race:** take YB to **port**.

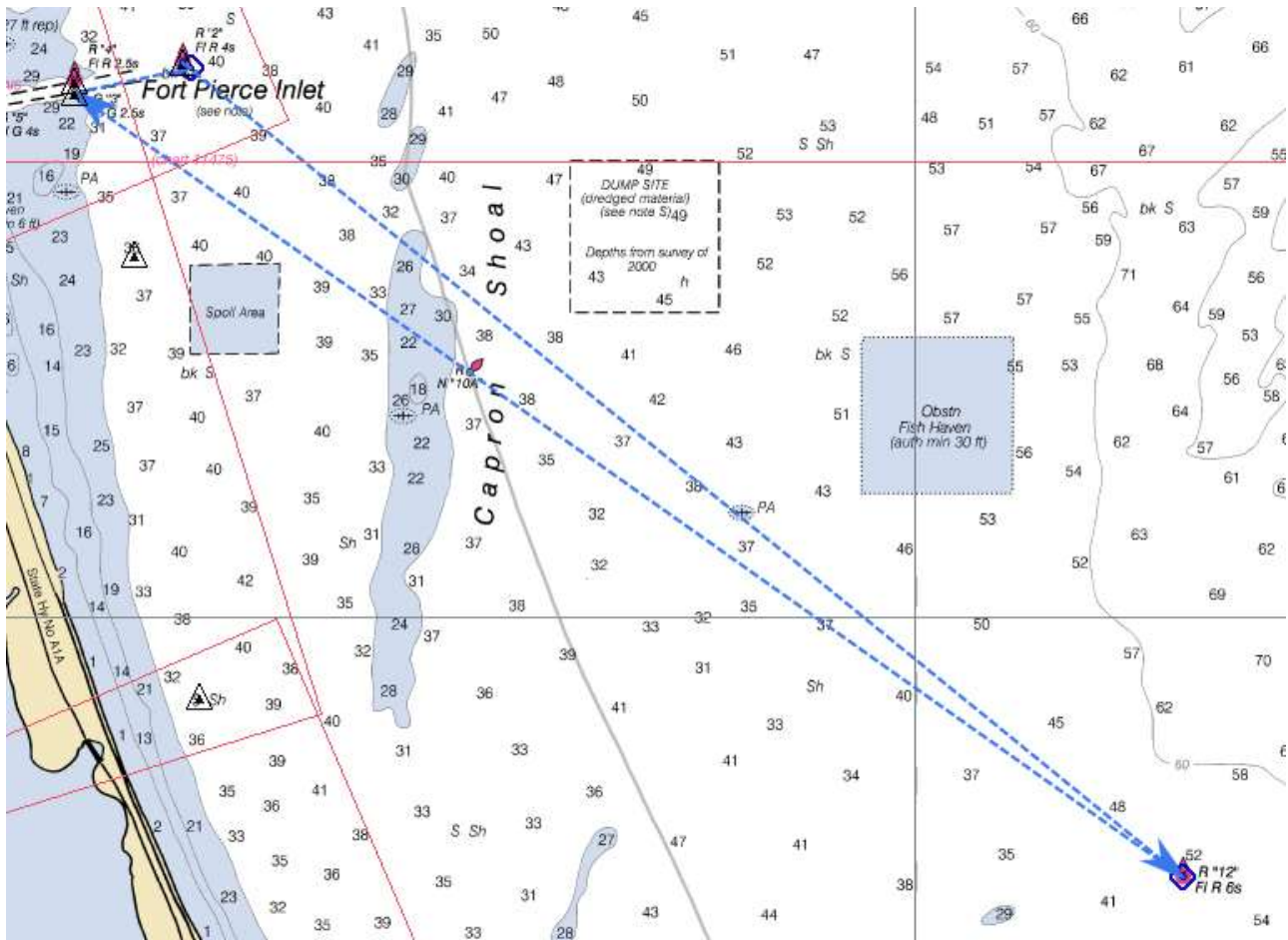




Ft. Pierce Yacht Club

Race Course 6 (18.3 nm):

Starboard Race: Start eastbound between G3 & R4; take R2 then R12 to **starboard**; Finish westbound between G3 & R4. **Port race:** take R12 then R2 to **port**.





Ft. Pierce Yacht Club

Race Course 7 (18.0 nm):

Starboard Race: Start eastbound between G3 & R4; take R12 to **starboard**; Finish westbound between G3 & R4. **Port** race: take R12 to **port**.

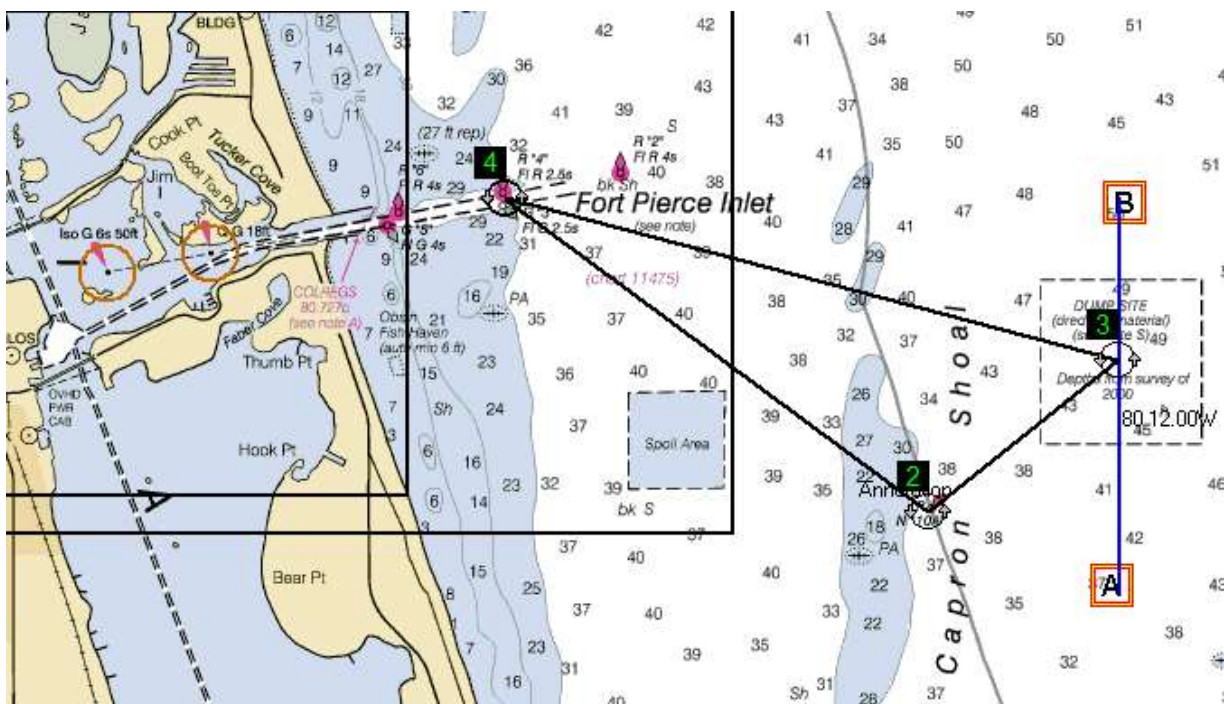
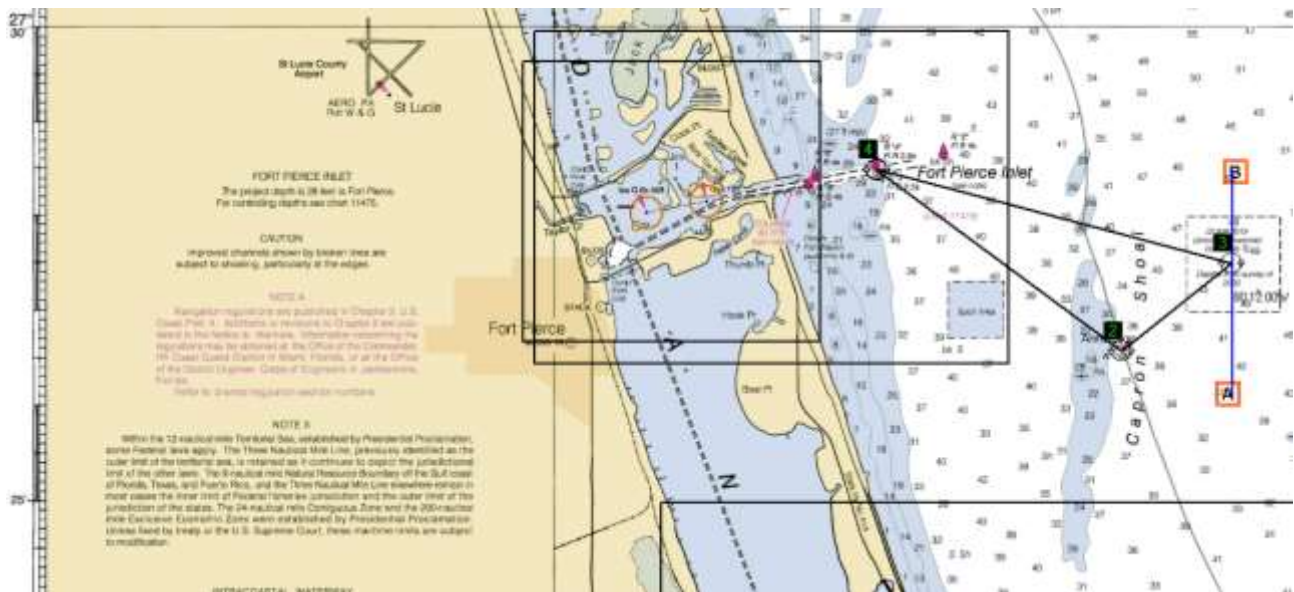




Ft. Pierce Yacht Club

Race Course 8 (8.2 nm):

Starboard Race: Start eastbound between G3 & R4; Proceed easterly and cross W Longitude 80 12.00, take Virtual 10A to **starboard**; finish westbound between G3 & R4. **Port race:** take Virtual 10A to **port**, proceed easterly to W Longitude 80 121.00, finish westbound between G3 & R4. *Note route numbers show port race. Latitude scale shown for measuring distance if you choose to cross further north or south than nominal point 3as shown.*





Ft. Pierce Yacht Club

Race Course 9 (25.2 nm):

Starboard Race: Start eastbound between G3 & R4; take YB to **starboard**; take R12 to **starboard**; Finish westbound between G3 & R4.

Port race: Start eastbound between G3 & R4; take R12 to **port and YB to port**; Finish westbound between G3 & R4

Race Course 10 (18.0 nm):

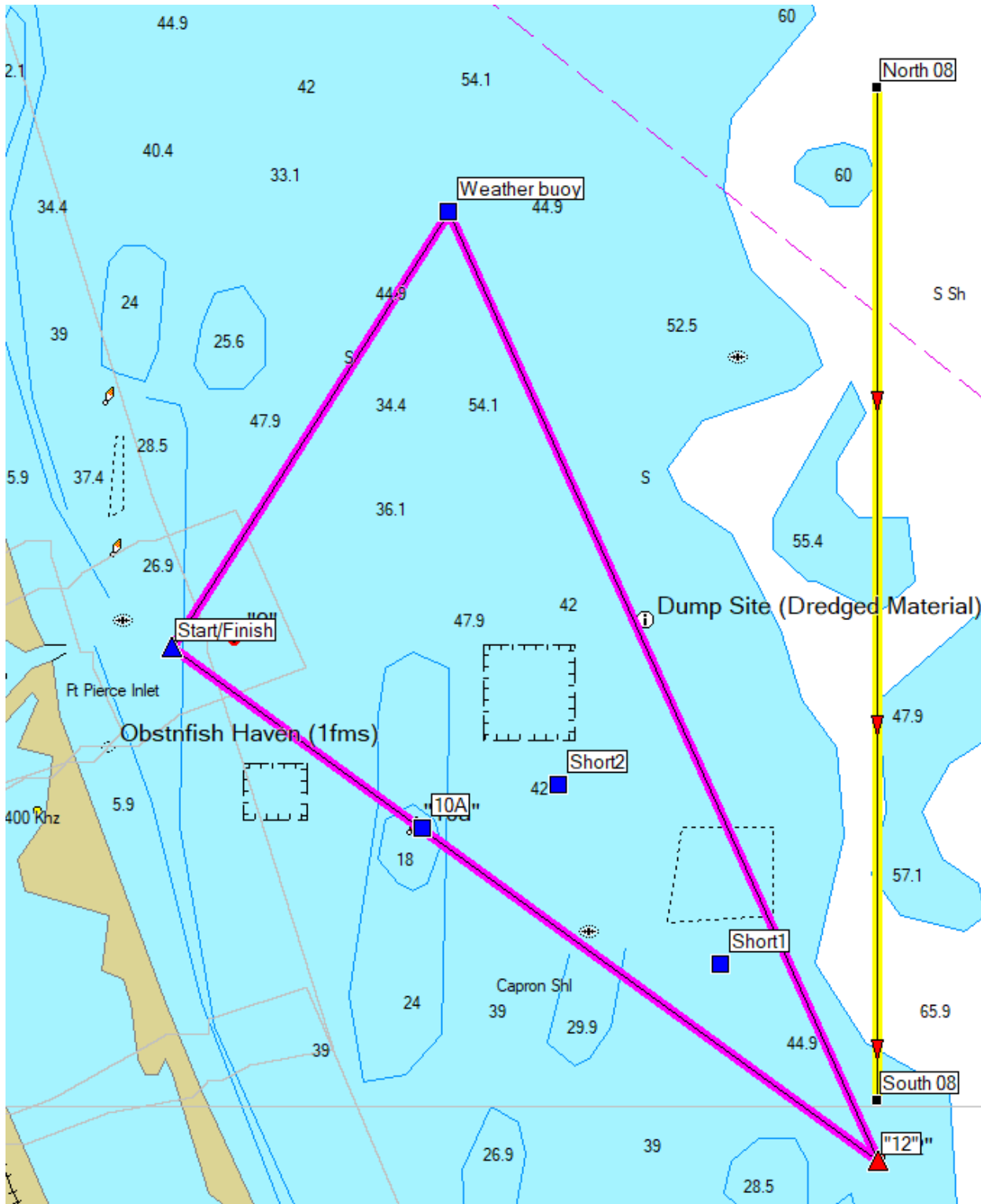
Starboard Race: Start eastbound between G3 & R4; take YB to **starboard**; Cross Longitude 80 08; Finish westbound between G3 & R4.

Port race: Start eastbound between G3 & R4; Cross Longitude 80 08; take YB to **port**; Finish westbound between G3 & R4

Start/Finish	N27 28.484 W80 16.221
Weather Buoy	N27 33.000 W80 13.000
"12"	N27 23.170 W80 07.974



Ft. Pierce Yacht Club





Ft. Pierce Yacht Club

In case of inclement weather, the following in-shore courses will be utilized. Both races will be staggered start races.

Race Course 11 (25.0 nm):

Race: Start southbound between ICW R 188 and Faber Cove/Harbor Isle entry channel R2; Proceed southerly and round ICW G219 to port; finish northbound bound between ICW 188 and channel marker R2.

Race Course 12 (4.2 nm):

Start northbound from line between ICW R188 and Faber Cove/Harbor Isle marker channel marker R2

Proceed North to pass G17 on starboard, taking easterly course into Inlet

Round G9 mark in Inlet to port

Proceed westerly to pass R12 on starboard, taking north branch of Inlet, behind Westly Island

Re-enter ICW in the vicinity ICW R 184

Finish southbound at ICW 188 and Faber Cove channel marker R2

Race Committee may elect to run the above multiple times

Race Course 13 (9.2 nm):

Race: Start southbound between ICW R 188 and Faber Cove/Harbor Isle entry channel R2; Proceed southerly and round ICW G197 to port (north of power lines); finish northbound bound between ICW 188 and channel marker R2.

Race Course 14 (13.4 nm):

Race: Start southbound between ICW R 188 and Faber Cove/Harbor Isle entry channel R2; Proceed southerly and round ICW G201 to port (south of power lines); finish northbound bound between ICW 188 and channel marker R2.

Race Course 15 (17.4 nm):

Race: Start southbound between ICW R 188 and Faber Cove/Harbor Isle entry channel R2; Proceed southerly and round ICW G207 to port; finish northbound bound between ICW 188 and channel marker R2.